

# DREXELBROOK®

## Coal and Fly Ash Solutions

---

- ||| Level
- ||| Fly Ash Level
- ||| Plugged Chute Detection
- ||| Empty Belt Indication



### PRODUCT AND APPLICATION GUIDE



**AMETEK®**

# DREXELBROOK Solutions

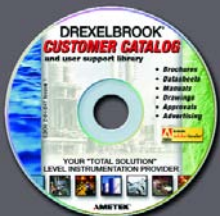
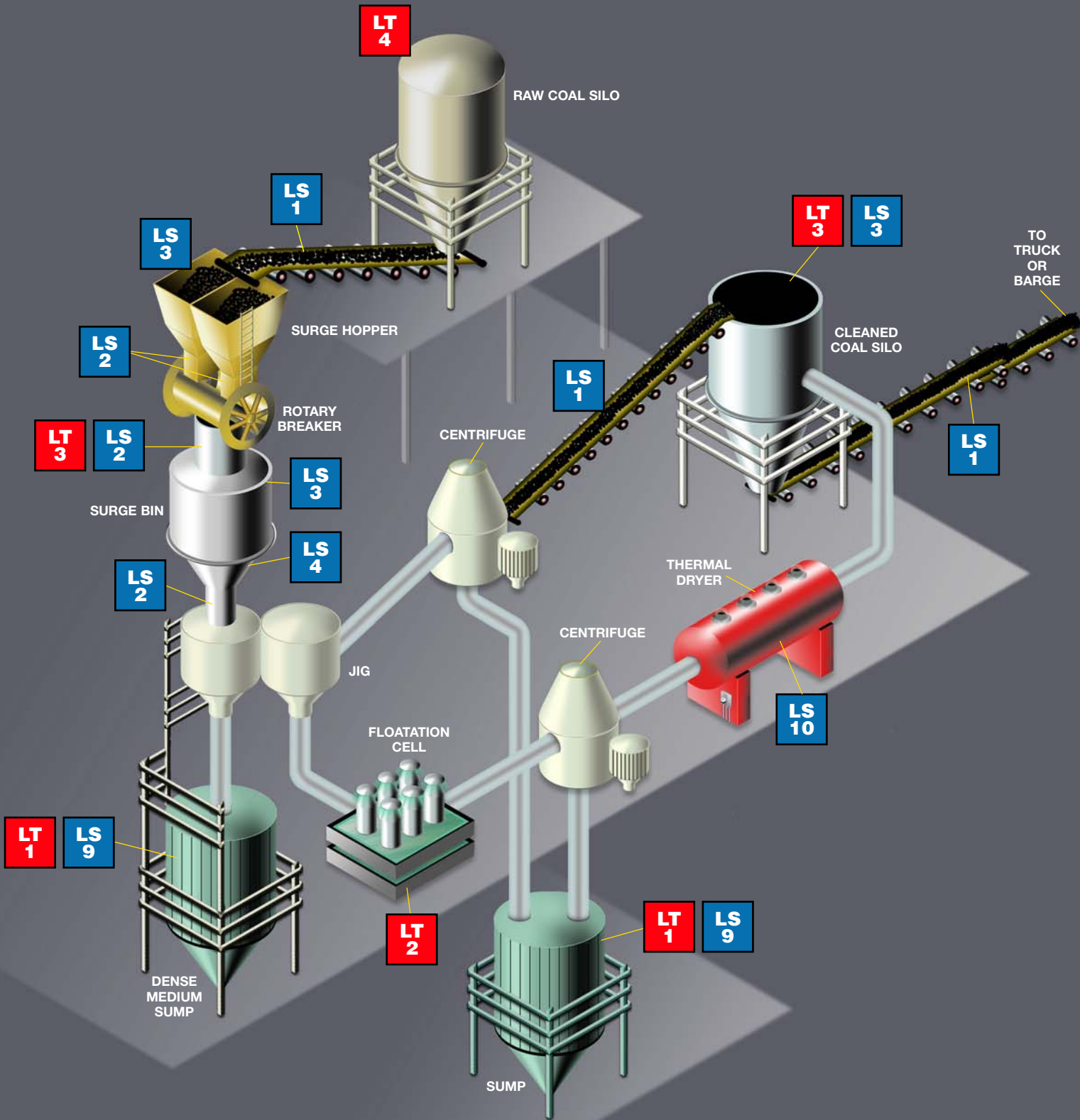
## POINT LEVEL MEASUREMENT PRODUCTS – For Coal Power Generation

Tag ID	Application	Technology Recommendation	Product Model Number	Data Sheet Number
<b>LS 1</b>	Empty Belt Detector	RF Admittance	PXL1-XX02	PNL1-A
<b>LS 2</b>	Plugged Chute Detector	RF Admittance	PXL1-XX50	PNL1-A
<b>LS 3</b>	High Level Alarm Silos, Bunkers, Surge Bins	RF Admittance	PXL1-XXZZ with 700-0221-002	PNL1-A
<b>LS 4</b>	Low Level Alarm – Coal	RF Admittance	PXL1-XXZZ with 700-0221-002	PNL1-A
<b>LS 5</b>	Heavy Duty Plugged Chute Alarm – Crushed Coal	RF Admittance	PXL1-XX53	PNL1-A
<b>LS 6</b>	High Level Alarm on Pulverizer Mill	RF Admittance	PXL1-XX00	PNL1-A
<b>LS 7</b>	Plugged Chute (Downcomer) Alarm	RF Admittance	PXL1-XX50	PNL1-A
<b>LS 8</b>	High Level / Low Level Alarm – Fly Ash	RF Admittance	PXL1-XX3X	PNL1-A
<b>LS 9</b>	Sumps	RF Admittance	506-3000-004	506-3000-A
<b>LS 10</b>	Thermal Dryer	RF Admittance	PXL1-XX02	PNL1-A
<b>LS 11</b>	High Level Alarm – Coal	RF Admittance	PXL1-XX02 or PXL1-XXZZ with 700-0221-002	PNL1-A
<b>LS 12</b>	High Level Boom Control	RF Admittance	PXL1-XX02	PNL1-A
<b>LS 13</b>	Diesel Fuel High Level Alarm – Back-up Fuel Supply	RF Admittance	PXL1-XX00	PNL1-A
		Vibration (Tuning Fork)	TF-LX0-XXXX	TF-100-A
<b>LS 14</b>	High Level Fly Ash Storage Silo	RF Admittance	PXL1-XX00	PNL1-A

## CONTINUOUS LEVEL MEASUREMENT – For Coal Power Generation

<b>LT 1</b>	Sumps	RF Admittance	509-0075-906 or RCT-1XX0-XXX-2C	509-75-A, RCT-A
		Ultrasonic	USonic Series	USA-XX-A
<b>LT 2</b>	Continuous Indication – Coal	RF Admittance	509-0079-009 or RCT-1XX0-XXX-6A	509-75-A, RCT-A
		Radar	DR7000	DR-7000-A
		TDR	DR7100	DR7100-A
<b>LT 3</b>	Coal Silos, Bunkers, Surge Bins	Radar	DR7000	DR-7000-A
		TDR	DR7100	DR7100-A
<b>LT 4</b>	Continuous Level – Fly Ash Silo	TDR	DR7100	DR7100-A
<b>LT 5</b>	Diesel Fuel – Back-up Fuel Supply	RF Admittance	509-0077-016 or RCT-1XX0-XXX-1B	509-75-A, RCT-A
		Radar	DR7000	DR-7000-A
		Ultrasonic	USonic Series	USA-XX-A
<b>LT 6</b>	Scrubber	RF Admittance	509-0075-906 or 509-0075-913	509-75-A
<b>LT 7</b>	Feed Water Heater	RF Admittance	509-0015-717 with 700-0001-344 modified 91-175	509-1A

# Coal Preparation

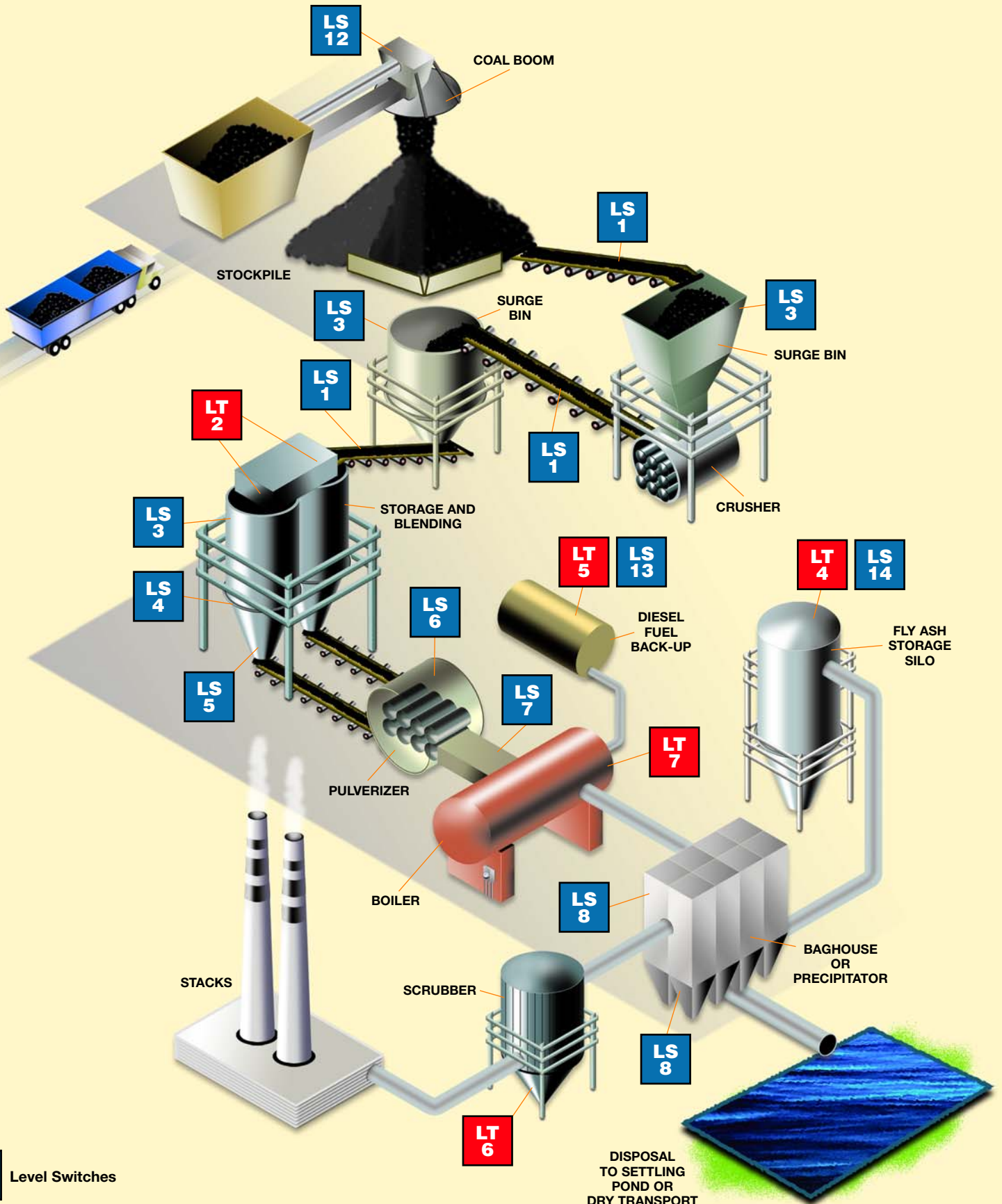


Drexelbrook's new electronic catalog is designed with the customer in mind, offering Product Bid Specifications, Agency Approval Information, Product Data Sheets, Drawings and Instruction Manuals for Drexelbrook's full line of level measurement products. It also contains the latest additions to the Drexelbrook product line, including its new wireless interface products. Call to request a free copy or log on to [www.Drexelbrook.com](http://www.Drexelbrook.com)

LS 1

LT 1

# Coal-Fired Power Plant



**LS 14** Level Switches

**LT 7** Continuous Level Transmitters

DISPOSAL TO SETTLING POND OR DRY TRANSPORT  
 (Note: See brochure 420-0001-299 for wastewater processing)

# The DREXELBROOK Commitment

*Drexelbrook has been ranked #1 in various categories by Control Magazine readers for the last fourteen years*



## AMETEK Drexelbrook

is known worldwide as a premiere manufacturer of high-quality level instrumentation. We have earned that reputation as a result of the expertise we have gained and the relationships we have developed over the years with our valued customers. As a company, we have always supported our products and customers to the highest possible degree, while always looking for ways to further improve our efforts.

We believe our fundamental approach to business best serves all parties. That approach is based on thoroughly understanding the end user's application and then making the best possible product recommendations. Properly applied products that utilize proven technologies assure the highest degree of product reliability. Drexelbrook's success with that approach is due to the wide range of products and number of different, proven technologies we offer.

The Fossil Fuel Power Generation industry is a major global market for Drexelbrook. Our RF Admittance point level switches and continuous level transmitters are designed to meet the extreme environments found in power plants and coal yards. The rugged sensors with no moving parts are maintenance free and will provide years of reliable service. In addition to our well-established RF admittance products we also offer best in class Radar, TDR, Ultrasonic, and Vibration level measurement instruments. As a result of our wide range of products and over 45 years serving the power industry, we are in a unique position to provide the best possible solution to meet your level measurement requirements.

When selecting instrumentation for coal yard or power plant level measurement applications, we certainly would very much appreciate that you consider Drexelbrook as your level measurement solutions provider.

**We guarantee you won't be disappointed!**

Sincerely,

The Employees of AMETEK Drexelbrook and our Worldwide Network of Representatives and Distributors

**NEW**



**USonic-R™**  
Remote  
Ultrasonic Level

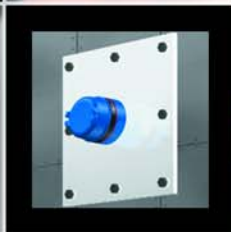
**With Patented SmartGain™ Circuitry**

**NEW**



**USonic™**  
Ultrasonic  
Level

**With Patented SmartGain™ Circuitry**



**Plugged Chute  
Detector**  
RF Level Switch



**Universal III**  
RF Admittance  
Continuous



**IntelliPoint RF™**  
RF Admittance  
Level Switch



**ThePoint™**  
RF Admittance  
Level Switch

**NEW**



**DR7000**  
Radar

**NEW**



**DR7100**  
TDR

## Wireless Interface Solutions

AMETEK Drexelbrook wireless interface products utilize 902-928 MHz ISM band spread spectrum frequency hopping technology to guarantee a license free, interference free link between remote devices and the control room. Costly cable and conduit runs on new projects, or retrofitting of existing systems, are eliminated and replaced with a maintenance free, reliable wireless interface. Common applications include monitoring of level, flow, pressure, temperature, and discrete alarms.

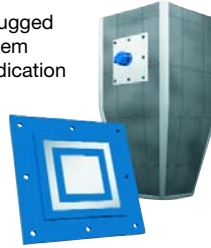
Radios are available for point to point or multipoint to point configuration.



## Plugged Chute Detector

The Drexelbrook plugged chute detector system provides reliable indication of chute plugging, reducing downtime and material spill over.

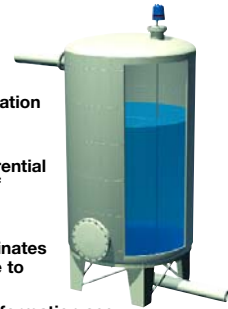
- Unique sensor design does not interfere with flow of material
- Cote-Shield™ technology eliminates false alarms due to coatings
- Electronics can be mounted remotely away from high vibration environments
- Contains no moving parts to wear or hang up and no routine maintenance is needed
- For additional information see data sheet RMX-PC-A



## Multipoint II™

The MultiPoint II level control is an economical solution for processes requiring multiple operating points, such as batch processing and sump applications.

- Four operating points on one vertical sensor
- One tank penetration reduces fugitive emission points
- Adjustable differential for pump On/Off control
- Cote-Shield™ technology eliminates false alarms due to coatings
- For additional information see data sheet 506-3000-A



## Other Products from AMETEK Automation & Process Technologies

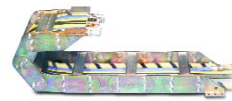
**The 2000 Rotary Limit Switch** is used for machine tools, handling devices, and where motion is expressed in shaft rotation. This switch controls the intermediate or end limits of a linear or rotary motion. The switch is often used as a safety device to protect against accidental damage to equipment. Available as Worm Gear, Spur Gear, Heavy Duty; 2, 3, or 4 circuit.

**The 950IS Linear Transducer** is an intrinsically safe analog system. The system uses a remote transmitter mounted in a safe area wired through intrinsically safe barriers to the LDT, which may be mounted in a hazardous area. This system incorporates circuitry that is UL listed for use in Class I, Groups C and D, Class II, Groups E, F, and G, and Class III hazardous locations.

**Mill-Duty CATRAC Cable and Hose Carriers** are used on machinery to safely and efficiently convey power, electrical, air, or fluid to equipment in motion while preventing cables from abrasion, wear and twisting. Box beam construction, hardened shoulder bolts and locknuts are available for use in extreme environments. CATRACs are zinc plated with a yellow dichromate dip for superior corrosion resistance.

**GEMCO 1986XP Resolvers** provide rugged and accurate rotary positioning in a variety of industrial applications. Resolver transducers hold up in harsh environments and are always absolute. UL, CSA, NEC Class I, Division I, Groups C & D, Class II, Groups E, F, & G.

**The 953 Vmax™ LDT** offers new versatility with features like a programmable span, measuring range of up to 300 inches, variable power supply ranging from 7 - 30 VDC, low power consumption (1 watt typical), and analog output signals (0 - 10 VDC, or 4 - 20mA).



**AMETEK®**  
DREXELBROOK

205 Keith Valley Road • Horsham PA 19044 U.S.A. • Web: [www.Drexelbrook.com](http://www.Drexelbrook.com)

U.S.A. Sales: 800-553-9092 • 24-Hour Service: 800-527-6297 • Domestic Sales Fax: 215-956-3815 or 215-956-3824  
Main Fax: 215-674-2731 • E-mail: [drexelbrook.info@ametek.com](mailto:drexelbrook.info@ametek.com) • International Support: 215-674-1234 • International Sales Fax: 215-672-8981

*We have over 70 distributors worldwide. Contact our sales support in your region.*

**AMETEK Nihon Drexelbrook**  
2 Chome • 12-7 Minami Gyotoku  
Ichikawa City • Chiba 27201 Japan  
Phone: 81-473-56-6513  
Fax: 81-473-56-6535  
E-mail: [nd@nihon-drexelbrook.co.jp](mailto:nd@nihon-drexelbrook.co.jp)

**AMETEK Singapore Pte. Ltd.**  
10 Ang Mo Kio Street 65  
#05-12 Techpoint • 569059 Singapore  
Phone: 65-6484-2388  
Fax: 65-6481-6588  
E-mail: [aspl@ametek.com.sg](mailto:aspl@ametek.com.sg)

**LISCO Analytical**  
Lisco Analytical ApS  
Naverland 2 • DK-2600 Glostrup  
Tel.: 3990 3905 • [www.Liscotech.dk](http://www.Liscotech.dk)

FOR INFORMATION ON OTHER AMETEK POWER GENERATION PRODUCTS, PLEASE VISIT: [www.ametek.com](http://www.ametek.com)